



Bulk MATERIAL Handling



BULK MATERIAL HANDLING TECHNOLOGY



Bulk Material Handling Solutions & Equipment under PRG Group:

Bulk material handling encompasses the machinery, devices, and systems essential for handling, moving, storing, and processing substantial quantities of bulk materials. This equipment is integral to sectors such as mining, construction, agriculture, manufacturing, and logistics, where handling loose, granular, or free-flowing substances is routine. Core functions include material transport, storage, loading/unloading, and processing through various methods like crushing, grinding, and mixing.

Key Equipment & Solutions

- **Conveyors, Hoppers, Loaders, Crushers, and Dust Collection Systems:** These ensure efficient material flow, enhance productivity, and support seamless operations.
- **Retro-fitment & Service Enhancements:** Include repairs and reconditioning efforts to improve operational efficiency and longevity of equipment. Notable services:
 - Secondary Sizer repair, providing cost savings and enhancing durability.
 - Hard-facing fabrication on breaker plates to increase throughput and extend service life.
 - Bunker liner replacement, reducing downtime and optimizing performance.

COMPANIES INVOLVED:

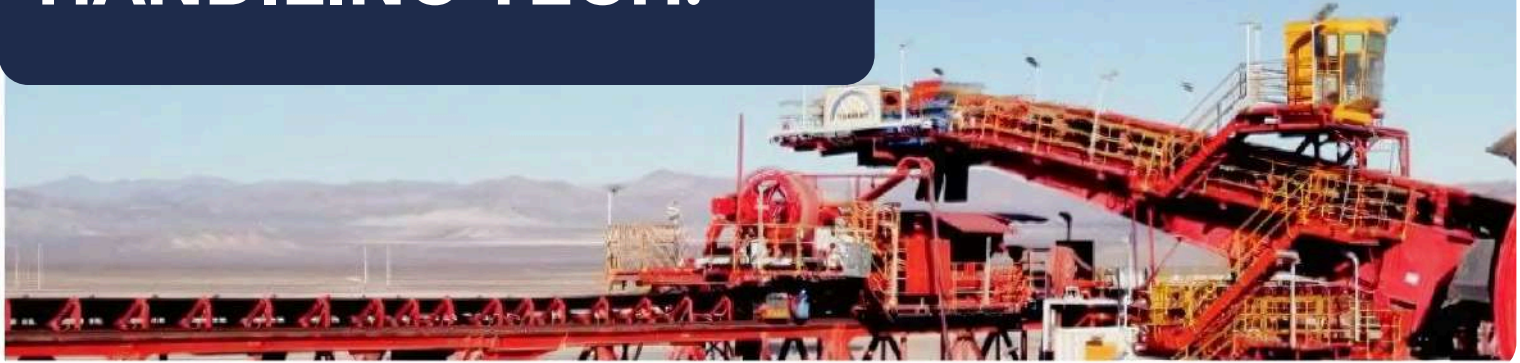
KRASNY PROJECTS PVT. LTD.





Bulk Material Handling & Equipment

BULK MATERIAL HANDLING TECH.



Bulk material handling refers to a wide range of machinery, devices, and systems used for efficiently handling, moving, storing, and processing large quantities of bulk materials. Bulk material handling equipment is essential in industries that deal with loose, granular, or free-flowing substances in large volumes, such as mining, construction, agriculture, manufacturing, and logistics.

The primary objectives of this equipment include the transport of materials from one location to another, the provision of storage solutions, the loading and unloading of materials onto transportation vehicles, and the processing of materials through crushing, grinding, screening, mixing, or other necessary steps. These equipment systems, such as conveyors, hoppers, loaders, crushers, and dust collection systems, play a crucial role in industries that deal with bulk materials, facilitating seamless material flow, enhancing productivity, and ensuring efficient operations.

Universal MEP Projects & Engineering Services Limited are committed to environmental and social sustainability in all our business interactions.

Our projects across all sites provides the most suitable solution to all their esteemed customer with their unique project requirements. We assist our clients in overcoming the most complicated challenges in transforming the resource industry towards a sustainable future. We focus on specific areas that are critical for reliable and sustainable operations, as it is here where we best support our clients with innovative solutions that save energy, lower environmental impact and meet or exceed operational requirements.

We are recognized service provider when it comes to run-of-mine and bulk material handling. Our brand portfolio ranges from coal beneficiation, to raw material extraction, comminution, conveying, loading/unloading, processing, homogenizing, blending, storage and final loading for onward shipment.

We leverage our product & service expertise by offering a unique combination of both application experience and product-based knowledge. Clients therefore benefit from direct technical discussions with our local specialists, who are able to draw upon this expertise and provide the most suitable local solution and service that enhances safety, improves sustainability, decreases costs and increases efficiency.

Retro-fitment & Service Enhancements

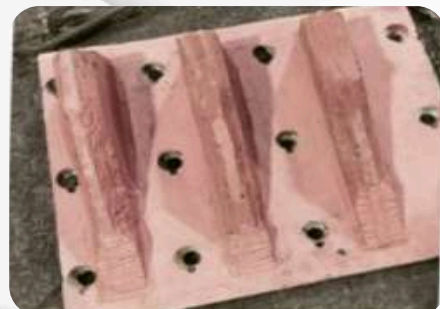
- **Repairing of Secondary Sizer at CHP**

Successfully repaired the secondary sizer spare segment teeth at coal beneficiation on trial basis and finally got the new ARC for 3 years (12.12.23 to 11.09.26).



Our repaired teeth crossed the targeted coal throughput (i.e., >12 L within 4 months) & perform best result instead of the previously used new takraf sizer spare segment teeth.

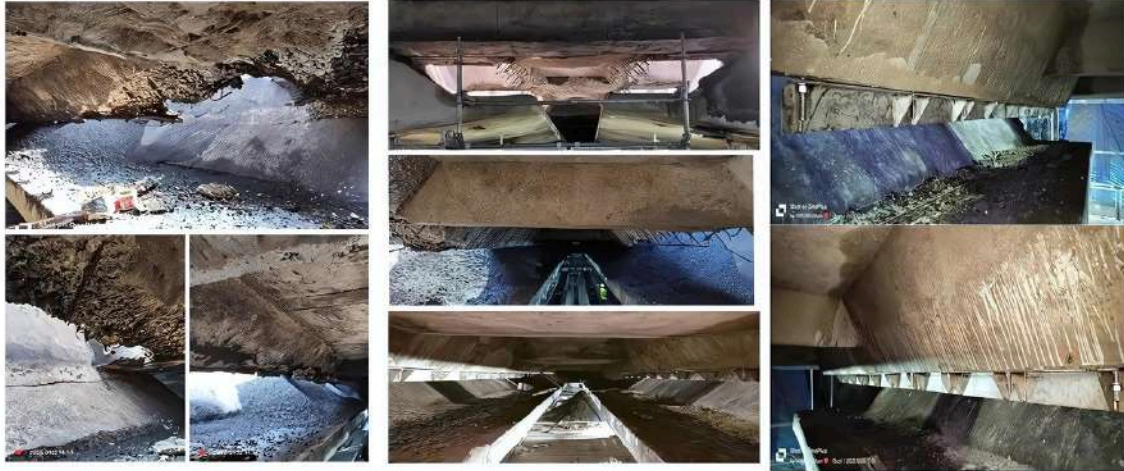
Hard facing on Breaker Plate



Successfully completed the fabrication job of hard facing on breaker plate at coal Beneficiation on trial basis and finally got the new ARC For 3 years (15.06.2024 to 14.03.2027)

- **Bunker liner Replacement**

Washery-3 Bunker Liner Before and After View



Successfully completed the bunker liner replacement job at Coal Beneficiation (CB)-W#3,TSL
WBD- ARC (20.12.2022 to 31.12.2024)

- **Revamping of Hydraulic System For Both Crusher (Impactor)**



Successfully completed the revamping of hydraulic system of both tertiary crushers (Impactors) at Coal
Beneficiation (CB)-CHP, TSL WBD (25.01.2024 to 24.01.2025)

BENEFITS to Customer:

1. Easy operation & elimination of man - machine interface.
2. Reduction in down time of crusher.



OUR PREAMBLE

Expertise to overcome challenges capitalize on opportunities and drive the business forward. For over 60 years, Mining and Construction Equipment Division (M&CE) of PRG & UMPEL has been leading the nation's mining revolution by bringing in Innovative technologies that advance mechanization. Our role as a Value-Added link between Manufacturers, Suppliers and End users.

Mining Industry helps our customers innovate, improve profitability as well as scale quickly and cost effectively enabling sustainable competitive advantage. Our growing list of satisfied "Heavy Earth Moving Mining Machinery" customers across the globe stands testimony to our ability to deliver what we promise.



OUR CORE STRENGTH

- **Tata Brand name**
- **Good Customer**
- **Connect**
- **Established set up Proven track record**
- **Cater to Multi-brand**
- **Principal support**
- **Ability to take new challenges**
- **Dedicated & hardworking team**



MEP PROJECTS
& ENGINEERING
SERVICES LIMITED

A 100% wholly owned subsidiary of Voltas Limited
A **TATA** Enterprise

Industry Served



Mining



Power



Cement



Steel

Our Key Clients

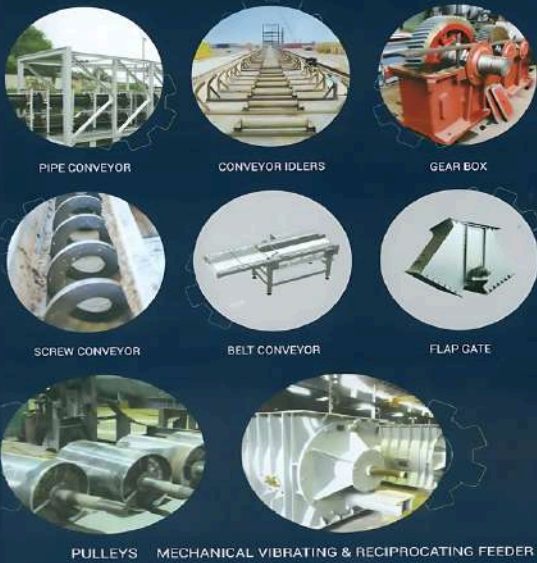


एनएमडीसी



TATA STEEL

Our Product Offerings



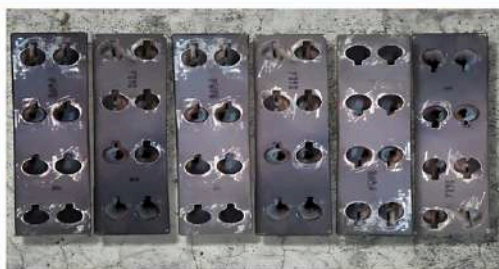
We offer wide range of material handling products that provide turnkey solutions.

Our Product Offerings

We develop customized products based on customer needs



APRON FEEDER



BLOW BAR



ROTARY PLOUGH FEEDER



WAGON TIPLER



CONICAL CHUTE

Bulk Material Handling- Key Projects

Annual Maintenance Contracts

- ❖ Nigahi Opencast Coal Mining project is the largest Opencast Coal Mining projects in India with an annual current coal production capacity of 15Mtpa.
- ❖ Coal from this opencast coal mining projects are being supplied to largest pit head Thermal power plant of NTPC -Vindychal which has an installed capacity of 5960MW.



- ❖ NIGAHİ CHP PACKAGE A - Coal Handling Plant with 1600 TPH Cross Country Conveying System, 3.5 Km long having 35 m deep Receiving Pit cum Crusher House, 1500 TPH capacity Gyratory Crusher, Apron Feeder along with 16000 T capacity Ground Bunker with reclaiming facility by 4 nos. Plough Feeder.
- ❖ NIGAHİ CHP PACKAGE B- Coal Handling Plant with 1600 TPH Cross Country Conveying System stretching over 3.5 Km distance having 35 m deep Receiving Pit cum Crusher House, 1500 TPH capacity Gyratory Crusher, Apron Feeder and 3000 T Capacity RCC Silo with Rapid Loading System having discharge Capacity of 5500-9200 TPH

OVERHAULING OF COOLING SYSTEM AT COAL BENEFICIATION



CONVERSION OF DRIVEFOR BC2



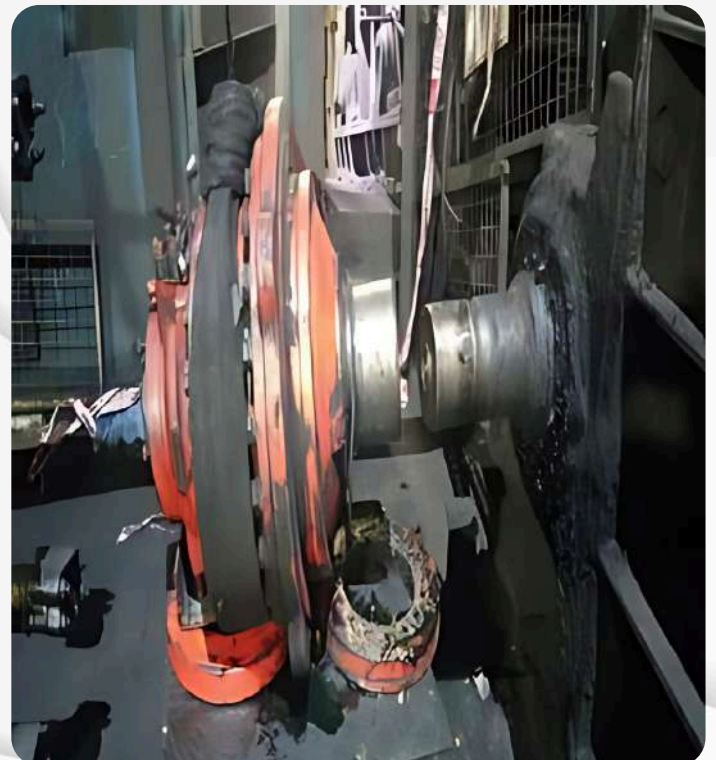
BEFORE DISMANTLE OF 2ND HYD. MOTOR



BENEFITS:

- Energy & costsaving. [Previously consumed- **500kwh**, Now consumed - **350 kwh**]. means **Energy saving-150 kwh per hour =150 x 20 hrs in a day x Rs.8/- (per kwh Industrial price) =Rs. 24000/- in a day x 25 days working in a months. = Rs.600000/- in onemonth x 12 months in a year = Rs. 72,00,000/- in a year.**
- Reduction in down time maintenance of BC-2hydraulic system.
- Enhance the filter lifedue to low consumption of hydraulic oil.

AFTER DISMANTLE OF 2ND HYD. MOTOR



SUCCESSFUL CONVERSION OF DRIVE AT COAL BENEFICIATION & AMC FOR BC2 DRIVE MAINTENANCE FOR 3 YEARS



MEP PROJECTS
& ENGINEERING
SERVICES LIMITED

A 100% wholly owned subsidiary of Voltas Limited
A TATA Enterprise



**Operation Contract
for Truck Mounted
Electrically Operated
Heavy Duty Industrial
Vacuum Cleaning
Machine at Coal
Beneficiary Plant**





PINAKI
ROYCHOWDHURY
GLOBAL



INDUSTRY

- MINING & TECHNOLOGY
- EQUIPMENT TRADING
- BULK MATERIAL HANDLING
- FASHION INCUBATION
- FARM TECH
- SKILLING & PHILANTHROPY

PRG ON THE WEB

web : www.prglobal.co
email : corporate@prcgroup.in
phone : + 91 33 4003 21551 / 55
cellular : +91 90070 55566

COME OVER

PR GLOBAL
175 Block G, New Alipore, Kolkata 700 053
West Bengal, INDIA

Higher !

We must aspire.

Further !

We must reach into the
depths of possibilities.

Faster !

We must react to
change.

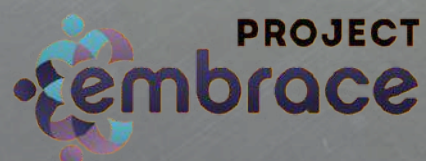
PR GLOBAL BRANDS



MECHANIC
MULTI BRAND SOLUTION



CREDO
CREDOFORU.COM

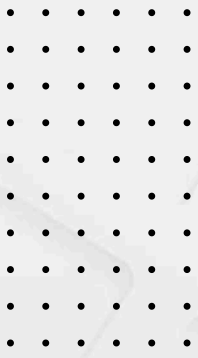


ABOUT PR GLOBAL

Pinaki Roychowdhury Global Group (PRG Group) is an emerging leader in industrial innovation, skill development, and social impact. With a diversified portfolio spanning mining technology, heavy equipment sales-service-rebuilding, fashion incubation and non-profit initiatives, PRC Global Group is positioned to drive value across multiple sectors. Headquartered in India, with global footprint at Dubai, Canada, Africa and East Europe, PRC Global Group is committed to excellence, sustainable practices, and responsible growth, with a clear path towards a future that has exponential growth opportunities within the domestic and foreign markets.

PRG Group is uniquely positioned to bring a diversified and sustainable portfolio to the public market. By integrating industrial expertise with social responsibility and a commitment to sustainable practices, PRC Global Group is set to attract investors who value innovation, resilience, and responsible growth. With a clear roadmap toward future readiness, PRC Global Group aims to unlock significant value for its shareholders and drive positive change in the industries and communities it serves.





WHAT WE DO

- ☑ Mining Technology & Services.
- ☑ Bulk Material Handling Technology.
- ☑ Equipment Trading.
- ☑ Fashion Incubation & Skilling.
- ☑ Corporate Marketing.
- ☑ Agri-technology.
- ☑ CSR Initiatives.



OUR ECO-SPACE

- KRASNY PROJECTS PVT.LTD.
- THE GLOBAL MACHINES LLC, DUBAI.
- IC-SURE PROJECTS MARKETING PVT LTD.
- CREDO CENTER OF EXCELLENCE
- PRG AGRO-TECH
- CREDO FOUNDATION



FOUNDER'S MESSAGE

At PRG, we are dedicated to delivering comprehensive solutions that span commodities, infrastructure, engineering, and technology. Our commitment to sustainable impact is reflected in our various initiatives, particularly through our CSR arm, the CREDO Foundation, which focuses on community empowerment and social responsibility through innovative skilling programs.

In the mining sector, we ensure ethical sourcing and advanced practices: **KRASNY Projects Private Limited** oversees national operations, while **The Global Machines LLC-Dubai** manages international projects.

IC-Sure Projects Marketing Private Limited, with the CREDO Centre of Excellence, champions the apparel sector by training rural citizens in garment production and equipping designers with entrepreneurial skills to foster sustainable fashion manufacturing. Our IT division provides complex hardware and software solutions, including robust e-commerce platforms.

PRG AGRI-TECH, Our commodity services encompass a broad spectrum—from agriculture and horticulture. Additionally, we support rural technology initiatives that promote scientific farming methods, assist MSMEs, enhance logistics, and develop edu-tech platforms for improved knowledge accessibility.

PRG, an integrated diversified Group, is positioned to expand into allied verticals creating a Global chain in Multi Brand Equipment Sales, Service and Managed services while also throttling ahead to create World class Fashion and Apparel global footprint.



CO-FOUNDER'S MESSAGE



PRG is focused into business ventures that support empowerment and contribute to the rural economic activities. Our projects are aligned towards the welfare of Women in particular as well as the under privileged in general.

CREDO Foundation: Touching Hearts, Spreading Smiles

At CREDO (Confederation of Rehabilitation, Empowerment & Daedal Organizations), we believe in building a sustainable ecosystem that empowers every individual to thrive, regardless of gender, economic, or social background. Founded as a charitable trust in 2019, CREDO has grown rapidly, dedicated to weaving a new economy where everyone can be part of the mainstream.

With 360 registered NGOs and entities under our umbrella, CREDO has invested over ₹50 million in projects that drive inclusive growth and skill development. Under our principal vision of creating an empowered society - to incorporate an organization specifically dedicated to implementing empowerment projects.

Through our work, CREDO is more than a foundation—it's a movement toward an inclusive future. We are committed to touching hearts, spreading smiles, and fostering empowerment through innovative vocational incubation.



OUR VISION

To be a global leader adding critical value to our clients while fostering innovation and delivering responsible, sustainable growth.

MISSION 02

To build and scale an ecosystem that integrates industrial expertise with responsible business practices.

MISSION 03

To maximize stakeholder value through disciplined growth and strategic expansion.

OUR MISSION

MISSION 01

To empower industries and communities through advanced technology, sustainable practices, and social impact initiatives.



LET'S CONNECT



+ 91 9007055566



www.prcgroup.in



corporate@prcgroup.in

